

# Turning Points

online

Wood Turning Center

July-September 2008

Issue: 07

## Up Front

### Another Award...

Executive Director, Albert LeCoff, shares the pleasures of another lifetime achievement award, and the planning for a forthcoming exhibit and book, *Challenge VII: dysFUNctional*.

PHOTO: Albert (L) accepts AAW Award from brother Alan (R).  
John Kelsey, photographer.



[Text-only version](#)

[Introduction by Alan LeCoff](#)

[AAW Profile](#)

### David Bender Moves On!

After three years and evolving roles at the Wood Turning Center, David James Bender moved on in July 2008. Hired soon after earning his Industrial Arts degree, "Bender" brought invaluable diverse skills to this nonprofit organization. He assisted administrators and managers with everything, and learned millions of additional skills on the job. His proficient graphic design skills emerged in signage, *Turning Points*, announcements, mailings, and at [www.woodturningcenter.org](http://www.woodturningcenter.org). Bender and brother and webmaster, Andrew Bender, worked together to produce this evolving site. At the same time, Bender coordinated our print magazine, *Turning Points*, and worked with long-time editor Terry Martin of Australia. Bender also oversaw computer systems, upgrades, lighting for exhibits, and facility needs - so invisible yet so crucial in a public art gallery and museum. Eventually, he designed and managed the transition of *Turning Points* into an electronic communication vehicle. Bender was the perfect candidate to manage events and the facility of the newly formed Philadelphia Center for Architecture, in



## In This Issue

[Up Front](#)

[At The Center](#)

[John Grass](#)

[New Books](#)

[My Turn](#)

[Opportunities](#)

## Featured Object from Museum Store



Stephen Paulsen  
*Figure Fetishes*, 2001  
Various wood  
Ebony, orange ivory burl,  
lacewood and koa  
\$3,500 + s/h

Steve Paulsen executed this independent pair somewhat larger than his usual work (17" left, 11" right). The head of the tall figure is a lidded box, big enough to secret small treasures.

conjunction with the American Institute of Architects (AIA). In helping the Wood Turning Center grow, Bender developed his next set of very professional skills. We wish him well and look forward to all his future successes. Thanks for everything, Bender !

## At The Center

### *allTURNatives: Form & Spirit 2008*

Through September 13, 2008

Through June and July, 8 international residents participated in the Center's International Turning Exchange residency. They lived and worked together in rented space at the University of the Arts. Their cultural backgrounds in Germany, Japan, New Zealand and the US resulted in splendid works in wood, glass, paintings and two videos. The galleries were packed on opening night, and the purchases were lively.

Photo: Satoshi Fujinuma, artist

[View online exhibit here](#)

The 2008 residents:

Jason Busch, visiting scholar, United States

Hunt Clark, artist, United States

Peter Exton, artist, United States

Satoshi Fujinuma, artist, Japan

Stephan Goetschius, artist, United States

Peter Oliver, artist, New Zealand

Martina Plag, artist, United States

Vincent Romaniello, photojournalist, United States

The visiting scholar, Jason Busch, sums up the long-term effects of his experience. [Beyond the Lathe: An ITE Perspective](#)

[Beyond the Lathe: An ITE Perspective](#)

***Check out the application for the 2010 and 2011 residencies.***

[Application](#)

***JOIN US FOR THESE DATES:***

*Challenge VII: dysFUNCTIONal*

October 3, 2008 – January 17, 2009

The Wood Turning Center is proud to announce the October 3, 2008, opening of its latest exhibition: Challenge VII: dysFUNCTIONal, which will run in the Center through January 17, 2009.

The exhibition creates visual dialogue between objects and videos that never were intended to be together. The works are persuasive in content, form, surface and movement, and evoke humor, curiosity and suspicion. [Continued](#)

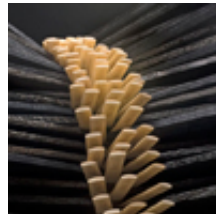


## Featured Object from the Collection



George Peterson  
*Doorway, Doorway,*  
(ITE 2000)  
Charred maple  
86.4 x 15.2 cm, 34 x 34 x 6"  
Donated by the Artist

Made entirely by chainsaw, during George's summer in the Center's International Turning Exchange (ITE) residency program. New tools and a larger shop facilitated Peterson's move into larger sculptures.



## On To The Future

## **Wood Turning Center at John Grass Wood Turning Company**

The Wood Turning Center's Board of Trustees and staff have thoroughly studied the feasibility of preserving an historic wood turning shop building as the next exciting home for the Center. This would combine a working historic wood turning shop with contemporary exhibits showing the historical continuum and breadth of this art form. [Continued](#)

Photo: John Grass Wood Turning Co.

[Help Save John Grass](#)

To see more photos, drawings, articles, updates and to find out how you can help visit [John Grass Wood Turning Company](#)



**Wood Turning Center**  
**Save John Grass Task Force**  
Chair [Alan Kaiser, Esq.](#)

Fundraising  
Walter Palmer, Jr., Labor Contractor

Publicity  
Emily Bittenbender, Owner & Contractor  
Mary Beth Bogan, Esq.

Architectural Oversight  
David B. Brawer, AIA

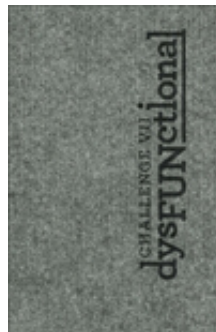
Political Oversight  
Richard Goldberg, Esq.

Engineering Oversight  
Nick Gianopulos, PE .

## **New Books**

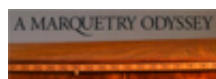
**Challenge VII:**  
*dysFUNctional* (WTC, 2008)  
Color \$30 + ship/h

The Center's newest publication documents this ground-breaking exhibition. It captures the whimsy and imagination of the artists, in a delightful design by award-winning designer, Dan Saal, who designed *Gord Peteran: Furniture Meets Its Maker*. To preorder, email [turnon@woodturningcenter.org](mailto:turnon@woodturningcenter.org). Will be available October 3 on web site.



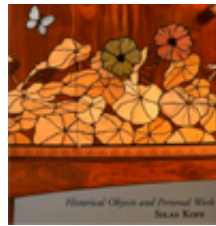
[Order here](#)

**A Marquetry Odyssey:**  
*Historical Objects and Personal Work*



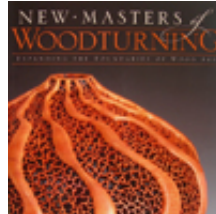
By Silas Kopf, Hudson Hills Press © 2008

Profuse photographs and encyclopedia-scope knowledge make this a milestone coffee table book. Kopf covers marquetry in timeless cultures (i.e. Egypt, Greece and Rome , France , England , Austria ), stylistic periods, and specific masters through time. The illustrations include Kopf s distinctive work and (unbelievably!) a how-to section !



[Order here](#)

***New Masters of Woodturning:***  
*Expanding the Boundaries of Wood Art*  
By Terry Martin and Kevin Wallace



Fox Chapel Publishing Company specializes in books of interest to fans of wood arts and the associated crafts. Large color photographs and artistic bios highlight the bullet pace of new work. Judson Randall reviews this fine new book.

[Jud Randall's Review](#)

[Hard Cover order here](#)

[Soft Cover order here](#)

***Collaborations at the Echo Lake Conferences:***  
*The First Ten Years 1999-2008*  
44 pages, color



Over 10 years, experts in wood, metal, and glass shared their methods and collaborated to reach creative new results over one annual long weekend. This exhibition reflects the thoughtful and delightful results of interacting and experimenting with like-minded makers on the same short deadline!

[Order here](#)

## My Turn

We welcome your feedback to *Turning Points*! The "My Turn" section is a place for everyone to share thoughts on *Turning Points* articles and the field of wood and lathe-turned art. Unless otherwise indicated, comments sent to *Turning Points* will be treated as letters to the editor for publication in *Turning Points*. Letters may be edited for length or clarity. To submit, simply send an email to [info@woodturningcenter.org](mailto:info@woodturningcenter.org) with "My Turn" in the subject line.



## Opportunities



## SOFA Chicago 2008 – November 7 – 9, 2008

GREAT PLACE TO SEE NEW WOOD ART !  
15th Annual International Sculpture Objects &  
Functional Art  
95 galleries and dealers from 15 countries.



This is a great year to experience SOFA and surround yourselves with wood art and friends ! Several galleries will specifically feature wood sculpture to add to your collection.

[Continued](#)



## Furniture and Woodworking Workshops

June 2 through Sept 19, 2008  
Anderson Ranch Arts Center  
Snowmass Village, CO

Visit the [Anderson Ranch website](#) for details

[Get the ITE application here](#)

## About Us

*Turning Points newsletter* and *Turning Points online* are electronic publications of the Wood Turning Center.

*Turning Points* staff: Suzanne Kopko, Director of Exhibitions and Collections  
Contributing writers: Albert LeCoff, Tina LeCoff

.....  
**Wood Turning Center**  
501 Vine St, Philadelphia, PA 19106, US  
[www.woodturningcenter.org](http://www.woodturningcenter.org)  
[turnon@woodturningcenter.org](mailto:turnon@woodturningcenter.org)  
p: 215.923.8000 f: 215.923.4403

**Save  
10%**

Your membership helps support the **Wood Turning Center's** not-for-profit programs, including *Turning Points*. Please consider becoming a member or renewing your membership at a higher level. Easily join or renew online! Members also receive 10% off all purchases of books, videos, and DVDs from our [Museum Store](#).

[Click here to renew or to become a member online](#)