

# Turning Points

newsletter

Wood Turning Center

May 2007

Issue: 02

## Executive Director's Statement

In the Center's twenty-first year as a not-for-profit, the wood field evolves at a breakneck speed set by artists. These are exciting times! What we like to do is give artists opportunities to show their new work and we like to see new work... [Read more](#)

## Editorial

by Robin Rice

We hope you enjoy our first Turning Points on the web. No doubt there are still a few kinks to work out, but we believe this is an efficient and lively way to provide you with fresh news and ideas from the Wood Turning Center every.... [Read More](#)



What is the value of these maracas by Michael Hosaluk? In the US, it depends on whether you made them or bought them...

## Coming of Age

With *Coming of Age*, the Wood Turning Center celebrates twenty-one years of exhibitions. Twenty-one is the traditional age of majority - adulthood - the moment when we human beings step into an expanded panorama of possibilities and responsibilities... [Read more](#)



Holly Tornheim, *Shell*, 2007; Holly; 7 x 7 x 2"

## In This Issue

[Editorial](#)

[Coming of Age](#)

[Spotlight on Sfirri](#)

[The Case Against the Vessel](#)

[Artswarm](#)

[2007 ITE](#)

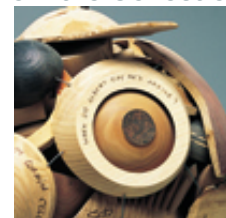
[ITE Lathe Raffle](#)

[Events Calendar](#)

[Featured Objects](#)

[Coupon](#)

## Featured Object from the Collection



Andrew Gittoes, Christophe Nancey, Merryll Saylan, Mark Bishop, & Tony Boase  
*Scrap Sphere*, 1997  
Wood, metal, pen, marker  
20 x 17 x 17"  
2005.04.25.006G  
Donated by the Artists

"This piece comes from the technique I call fractal turning which I was

## Spotlight on Mark Sfirri

by R. Vincent Johns

Wood, as we are all aware, comes from a tree. It is alive, organic; and it is one of the world's most valued resources. In its original state, wood is beautiful. From ebony to pine our earth is littered with nature's art. We, as humans, generally consume and destroy... [Read more](#)

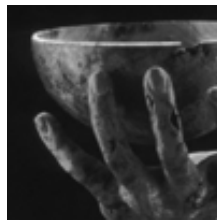


Mark Sfirri, *Spoonerisms*, 2007; Print; 11 x 17"

## The Case Against the Vessel

by Peter Exton

What is innovation in woodturning? Last summer the Wood Turning Center tried to find out by sponsoring an exhibition called *Innovations: Perspectives in Turning*. The exhibit featured lots of different woods, which is not unusual anymore... [Read more](#)



Michele Holzapfel, *Self-Portrait*, 1987; Cherry burl, 16 x 8 x 7"  
Collection of Bruce and Marina Kaiser

## Artswarm

Jack Larimore and Gord Peteran lead a collaborative art project with students from the University of the Arts and William Penn Charter School.

[Read the article here](#)



*9 Miles of Common Ground*, 2007; Bamboo, mason's line

## 2007 International Turning Exchange

The 2007 International Turning Exchange residents are rearin' to go. Following is an introduction to each of this year's residents with samples of their Pre-ITE work. Any guesses on how their work will develop this summer?

[Read the article here](#)



Jean Francois Delorme

## ITE Lathe Raffle

Have you ever wanted to know what the ITE is all

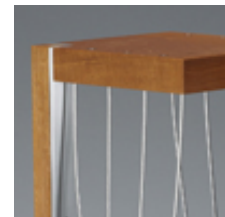
exploring during the ITE. At the end, just before the exhibition at Berman, we decided together to make a sphere by cutting, breaking and compacting all the unfinished and broken pieces we made during the residency. Two hours before the opening, we glued the last parts. Each of us has parts of work inside, even Doug Finkel, who was facilitator for this year. The cap on top came from an unfinished piece made the year before by Terry Martin."

-Christophe Nancey

This object was exhibited in the Center's *allTURNatives* exhibit in 1997 and is currently on display in the travelling exhibit *Connections: International Turning Exchange 1995-2005*, currently at the Mobile Museum of Art in Alabama, US.

-----

## Featured Object from Museum Store



Peter Harrison  
*Xenon*, 2006

Mahogany, stainless steel, cable, aluminum, concrete, pencil  
36 x 10 x 10"  
\$1100 + s/h

Peter Harrison will be the furniture maker in this year's International Turning Exchange [ITE] program. His work has developed from one-of-a-kind furniture, to sculpture, to his current line of handmade limited production furniture. Peter looks forward to the ITE program as a "unique opportunity to come together with other artists to collaborate and explore our distinct styles while

Have you ever wanted to know what its like to be in the Center's International Turning Exchange program? You can find out by winning the Stubby lathe used in this years residency! Tickets will be \$50 each, or 5 for \$200. Only 250 tickets will be available, and they will go on sale next month. Stay tuned...



our distinct styles while pioneering new avenues."

For information on purchasing *Xenon*, please contact the Center: 215.923.8000

-----

[For more information on Stubby lathes, click here](#)

## Events Calendar

(click on title for event website)



### **Coming of Age:** **Emerging and Established Wood Artists**

February 16 - May 19, 2007

Wood Turning Center  
Philadelphia, PA, US

Thierry Martenon, *14042004*, 2004



### **Man Made In The Natural World**

April 16 - May 19, 2007

Wexler Gallery  
Philadelphia, PA, US

George Peterson, *Legends*



### **Gord Peteran:** **Furniture Meets Its Maker**

May 12 - August 12, 2007

Winterthur Museum  
Winterthur, DE, US

Gord Peteran, *Barely A Table*, 2006



### **Roll Call:** **Wood Art from Current Teachers &**

#### **Students**

June 1 - July 15, 2007

Wood Turning Center  
Philadelphia, PA, US

Gareth H. Griffith, *From the Depths*, 2006



### International Events Wanted

Do you know of any wood art events going on in your part of the world? We'd love to know about them so we can share the information with our members. Please reply to this email with the relevant information.

Thank you for your help, the *Turning Points* staff

**Woodturning Center**  
501 Vine St, Philadelphia, PA 19106, US  
[www.woodturningcenter.org](http://www.woodturningcenter.org)  
[turnon@woodturningcenter.org](mailto:turnon@woodturningcenter.org)  
p: 215.923.8000 f: 215.923.4403